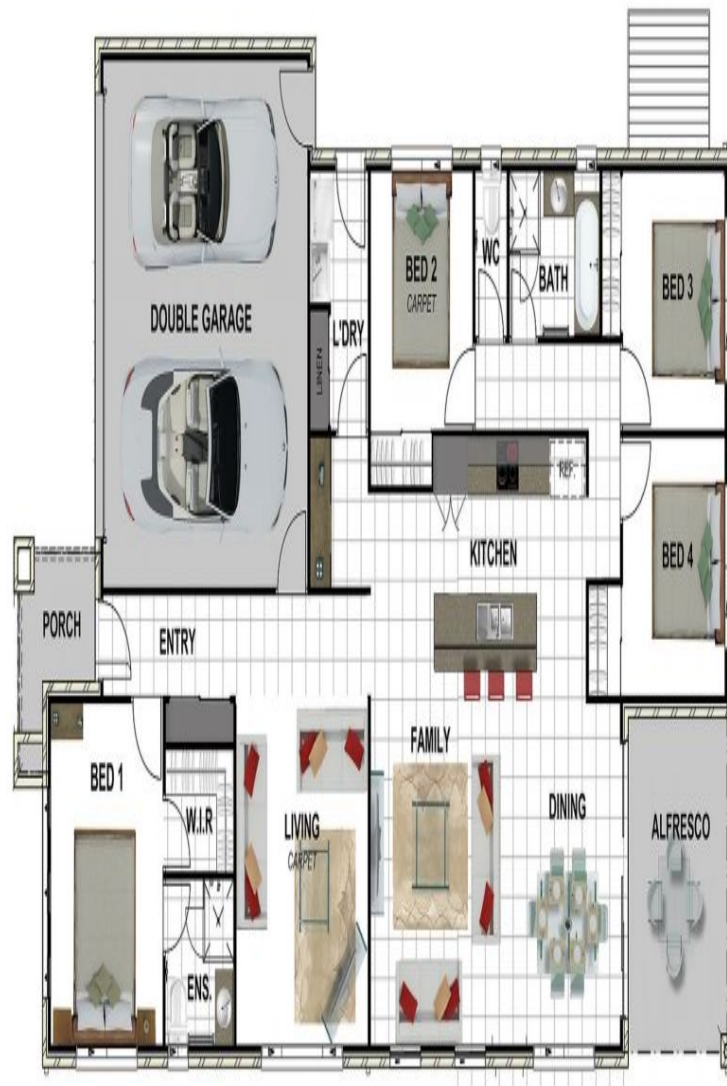


BUILD YOUR DREAM HOME WITH NO  
NASTY SURPRISES

# LOGAN RESERVE



**new  
home**  
Group  
from dreams to reality



Plans shown are only indicative of layout. Dimensions are approximate.

## LOGAN RESERVE

 4
  4
  2
  420

Price Fixed Price: \$467,308

Land Size 420m<sup>2</sup>

Building Size 190.45m<sup>2</sup>

Contact Brenda Hampson

0413 109 977

Type House

Logan Reserve, QLD

[NEWHOMEGROUP.COM.AU](http://NEWHOMEGROUP.COM.AU)

Disclaimer: Photographs and other pictures in this brochure/book may show fixtures, fittings or finishes which are not supplied by New Home Group, or which are only available in some New Home Group designs or when selected as inclusions above the standard inclusions for a particular design. This may include landscaping and outdoor items, floor coverings, furniture, kitchen, bathroom and light fittings and decorative items, which are shown as examples only. Please speak to a sales consultant to discuss detailed home pricing for different designs and inclusions.