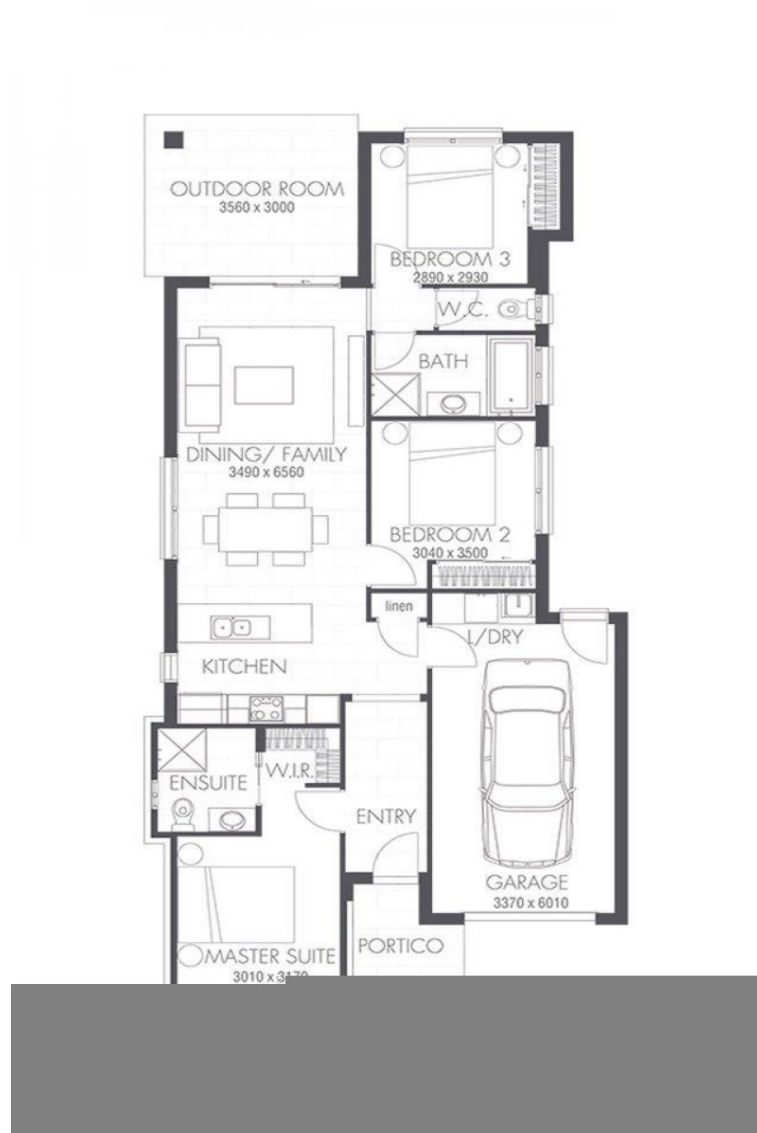


FIXED PRICE - NO MORE TO PAY

# LOGAN RESERVE



**new  
home**  
Group  
from dreams to reality



Plans shown are only indicative of layout. Dimensions are approximate.

## LOGAN RESERVE

 3
  3
  1
  300

Price Fixed Price: \$409,934

Land Size 300m<sup>2</sup>

Building Size 138.44m<sup>2</sup>

Contact Brenda Hampson

0413 109 977

Type House

Logan Reserve, QLD

[NEWHOMEGROUP.COM.AU](http://NEWHOMEGROUP.COM.AU)

Disclaimer: Photographs and other pictures in this brochure/book may show fixtures, fittings or finishes which are not supplied by New Home Group, or which are only available in some New Home Group designs or when selected as inclusions above the standard inclusions for a particular design. This may include landscaping and outdoor items, floor coverings, furniture, kitchen, bathroom and light fittings and decorative items, which are shown as examples only. Please speak to a sales consultant to discuss detailed home pricing for different designs and inclusions.