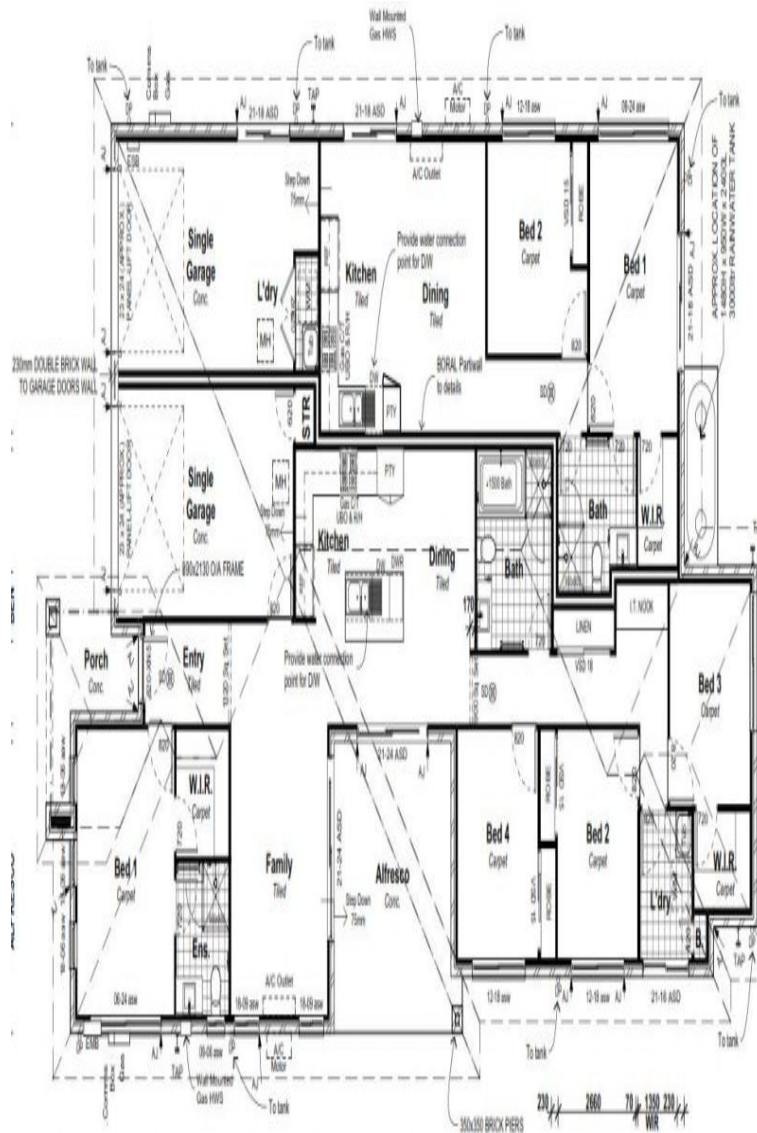


Dual Key - Dual Income - Positively
Cashflow - Growth Region

MORISSET



**new
home**
Group
from dreams to reality



Plans shown are only indicative of layout. Dimensions are approximate.



MORISSET

 6
  6
  2
  529

Price Dual Key From \$729,000

Land Size 529m²

Building Size 250.3m²

Contact Roy Skaf

0415 622 224

Type House

Morisset, NSW

NEWHOMEGROUP.COM.AU

Disclaimer: Photographs and other pictures in this brochure/book may show fixtures, fittings or finishes which are not supplied by New Home Group, or which are only available in some New Home Group designs or when selected as inclusions above the standard inclusions for a particular design. This may include landscaping and outdoor items, floor coverings, furniture, kitchen, bathroom and light fittings and decorative items, which are shown as examples only. Please speak to a sales consultant to discuss detailed home pricing for different designs and inclusions.