

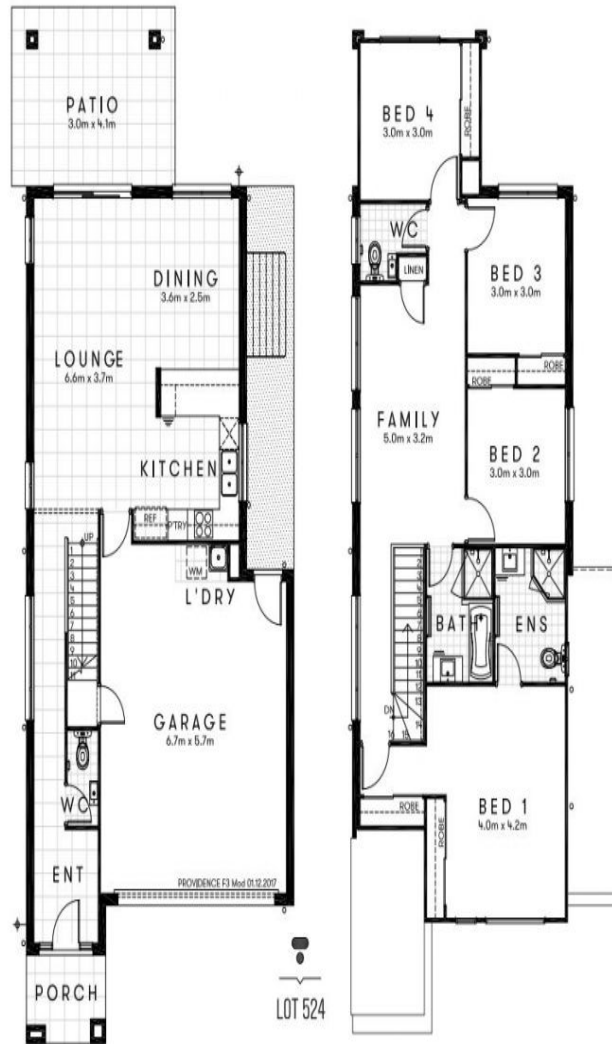
Modern Living! Enquire Now!

# HOLMVIEW

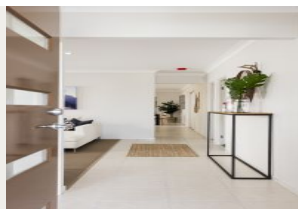


Artist's impression

**new  
home**  
Group  
from dreams to reality



Plans shown are only indicative of layout. Dimensions are approximate.



**HOLMVIEW**  4  4  2  250

Price From \$495,800

Land Size 250m<sup>2</sup>

Building Size 225m<sup>2</sup>

Contact Roy Skaf

0415 622 224

Type House

**Holmview, QLD**

[NEWHOMEGROUP.COM.AU](http://NEWHOMEGROUP.COM.AU)

Disclaimer: Photographs and other pictures in this brochure/book may show fixtures, fittings or finishes which are not supplied by New Home Group, or which are only available in some New Home Group designs or when selected as inclusions above the standard inclusions for a particular design. This may include landscaping and outdoor items, floor coverings, furniture, kitchen, bathroom and light fittings and decorative items, which are shown as examples only. Please speak to a sales consultant to discuss detailed home pricing for different designs and inclusions.